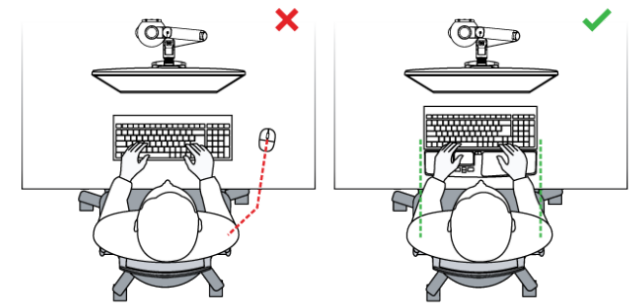


## ErgoSlider Plus

**The ErgoSlider+ is a central mouse which is positioned in front of the body and can be operated with both hands.**

The muscle activity can be distributed between both arms and that leads to a more relaxed posture and ergonomic way of working. This central mouse has great features, like one clickable roller bar for the navigation on the screen, four mouse buttons, a scroll-wheel, and a replaceable wrist rest. Minimise with the ErgoSlider Plus strain in your neck and shoulder and maximise comfortable working on your computer.



### Ergonomic background

In comparison to a traditional standard mouse, the central mouse is always in the correct position right in front of the body. In this way reaching out to the mouse is avoided. This keeps the body straight and the arms in a natural position close to the body. In addition, the movements are distributed in both arms and shoulders, instead of one arm. The result is a more relaxed posture during computer work. The muscle activity of the hand is also lower compared to a normal mouse (Lin et al., 2014).



## ErgoSlider+ Central Mouse

### Article code

BNEESLDG

### Barcode/ EAN-code on product package

8719274677710

### Guarantee period [years]

5 (after registration)

Click or scan for more  
information >



### Product design

Product colour(s)	Black, Dark Grey, Yellow
Hand	Right and left
Package content	Mouse, Manual, USB-A to USB-C adaptor
Protection bag included	No

### System requirements

Compatible devices	PC, Mac
Compatible operating systems	Windows, Mac OS
Minimum requirements operating systems	> Windows 7 > Mac OS X

### Mice General

Mouse type	Central
Mouse size	Universal
Mouse control/ sensor	Laser
Suitable for glass surfaces	Yes

### Product dimensions

Product weight [g]	413
Product dimension length [mm]	105
Product dimension width [mm]	390
Product dimension height [mm]	23

### Connectivity

Plug & play	Yes
Connection type	Wired
Length of cable [mm]	1400
Power supply	USB
Type USB connection	USB-A. USB-C possible via included adaptor.

### Mice Button & scrollwheel

On/off button	No
Scroll wheel	Yes
Number of buttons	5
Mouse functions	Vertical scrolling, Copy/Paste, Clickable scrolling
Driver available	No

### Mice DPI information

DPI adjustable	No
Number of DPI settings	1
DPI settings	800

### Package

Package weight including product [g]	650
Package dimension length [mm]	465
Package dimension width [mm]	160
Package dimension height [mm]	35

### Package material

Package material (s)	Paper/ Carton, Plastic, Foam
Package recycled %	71
Package recyclable %	98
Package biodegradable	Yes
Package biodegradable %	71

### Material product

Product material(s)	Plastic (ABS), Steel, Other, Aluminium, Rubber (Silicone), Foam (PU)
Product Recycled %	7
Product recyclable %	81
Product biodegradable	No

### Ergonomics, environment & quality

Declaration of Sustainability	<a href="#">bneesldg-declaration-of-sustainability-1727173985.pdf</a>
-------------------------------	---